



GeODin Shuttle is a free data collection program for collecting geological, geophysical and environmental data - ideal for a field laptop or for additional office workplaces.



## Free GeODin data collection program

GeODin Shuttle makes an ideal addition to your other GeODin licences. Use it on a laptop in the field and email your projects to your colleagues for further work. Alternatively use it in the office where data is manually typed in by non-technical staff. All projects created with GeODin Shuttle can be read by other GeODin programs. With it you can enter general data, layer data, sample and well design information and data sequences. Also several concurrent users may even work in the same project.

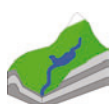
## Key features

GeODin Shuttle supports all object types developed for the GeODin platform. Whether you need to use an object type supplied by a local geological authority, BS 5930, Austrian, Dutch, Russian and Swiss standards or a geotechnical object type from Fugro, the user interface and the database structure remains exactly the same (the standard .mdb and .accdb Microsoft Access formats are supported).

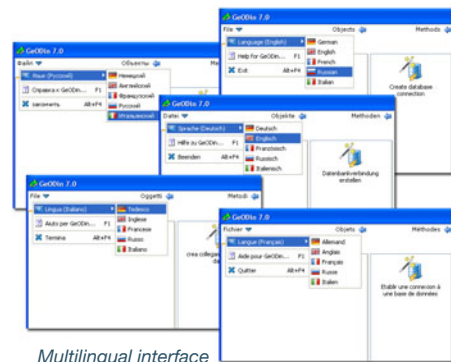
GeODin Shuttle contains mainly features of the full program in demo modus for you to try out: powerful CAD tools, geological cross-section and site plan assistants, layout organisation,

## SEP3 integration

The leading German local authority for soil exploration (LBEG) has developed a new modern standard for geological data collection: SEP 3. This has been implemented into GeODin and allows users to create detailed and descriptions of rock & soil horizons and print out borehole logs to their national standard.



**GeODin Shuttle** does not require a USB key. It can be downloaded from our homepage: [www.geodin.com/en/software\\_shuttle.html](http://www.geodin.com/en/software_shuttle.html)



Multilingual interface for working with international standards

Previous layer:	Depth to (m)	0,20	Following layer:	4,50
Field strength	stiff	Moisture condition		
Bedding	amorphous	Color	l-br,l-gr,mo	
Particle shape	organic	Weathering	slightly weathered	
Grading	uniform	SOIL NAME	gravelly FINES	
Plasticity	medium toughness	SOIL CODE	5	
Additional geological information	with occasional cobbles			
Water level observations				

Geological data collection to British standards: BS5930

Пред. слой:	След. слой:	43,00	Слой имеет	1	подслоев
Глубина до:	10,60	m			
Определяющее свойство:	карб	Осн. порода	Г	Втор. порода	орг,мест
Консистенция/Пластичность	млп	Структура		Прочность	
Плотность		Цементация		Влажность	
Цвет	свжелкор	Включения		Геондекс	
Стратиграфия	QIII	Генезис		ИГЭ	1
Автоматическое описание слоя					
карбонатная ГЛИНА, светло-желтовато-коричневая, мягкопластичная, с примесью органических веществ, местами илестый, на кровле Обломки ракушек					

Geological data collection to Russian standards: GOST