



# GeODin 7 Installation Guide



To get you quickly up and running with GeODin 7 here are the installation and license instructions ...



## Before you begin ...

For the installation of a GeODin license you need an **USB-HASP key**. Please attach the key to your PC and start the installation program by inserting your GeODin DVD.

Please make sure to quit all active programs before you begin the installation process.

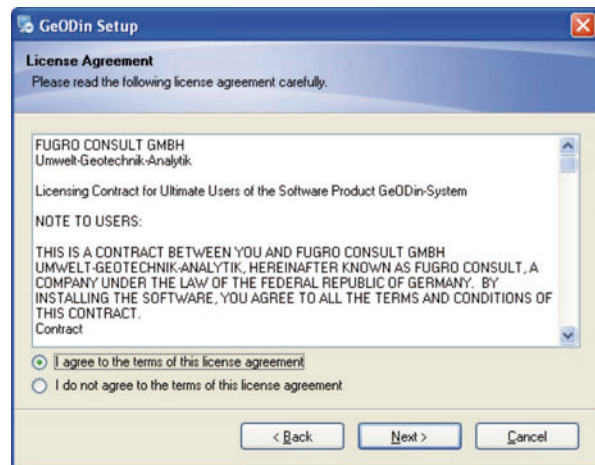
**Windows Vista and Windows 7 users** are strongly advised to install GeODin in a separate folder outside of the usual <Program Files> folder (e.g. in a folder C:\GeODin as opposed to C:\Program Files\GeODin).

If your Windows Vista or Windows 7 is installed on a separate partition from your data (e.g. Windows OS on C drive, data and other program files on D drive), please install GeODin on the latter drive.

These steps are necessary to avoid complications with Windows rights management issues. **Windows XP users may follow the suggested path in the GeODin installer.**

## Step 1: License agreement

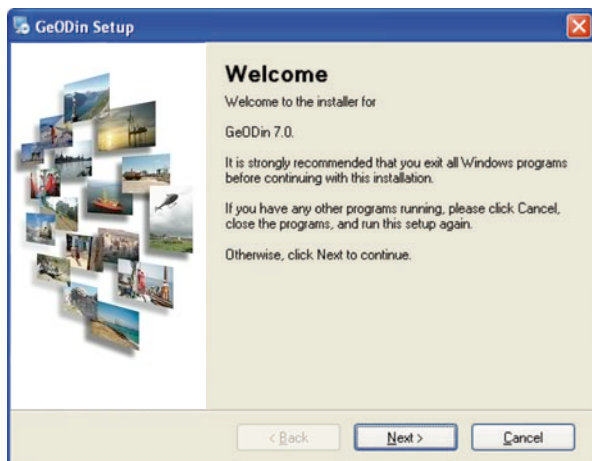
Please read the license agreement carefully.



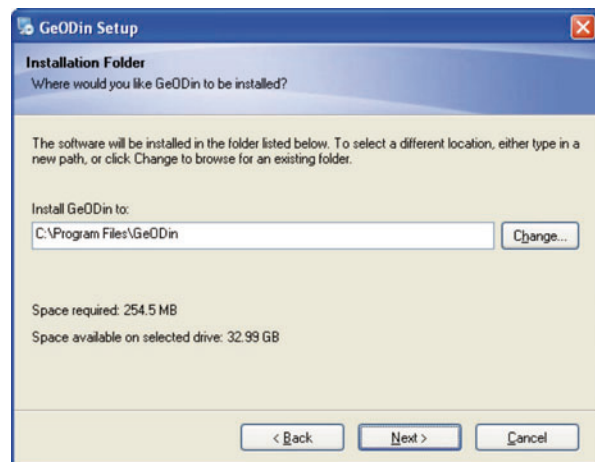
Step 1: License agreement

## Step 2: Installation path

Please choose where you want to install GeODin. **If you are updating from an earlier version, please choose the same GeODin installation folder.**



GeODin installation program: Welcome

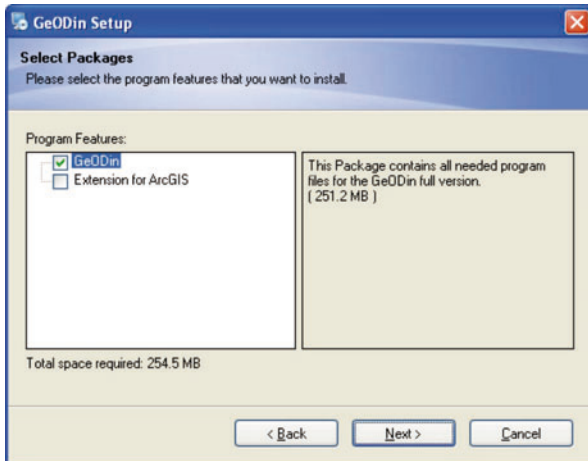


Step 2: Installation path

# GeODin 7 Installation Guide

## Step 3: Components

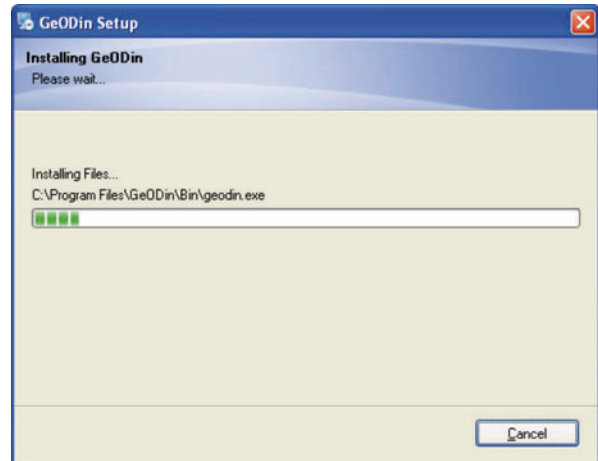
The installation program offers two components to choose from: the GeODin program files and the GIS extensions.



Step 3: Components

## Step 5: Instal GeODin

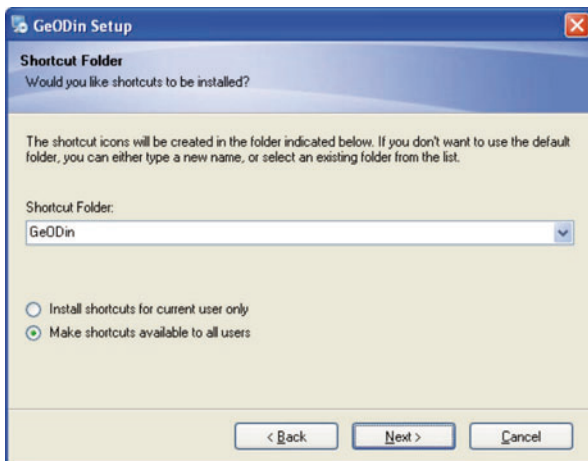
The GeODin program files will now be installed. This process may take several minutes.



Step 5: GeODin 7 is installing....

## Step 4: Start menu

Define where and for whom shortcuts should be created



Step 4: Start menu

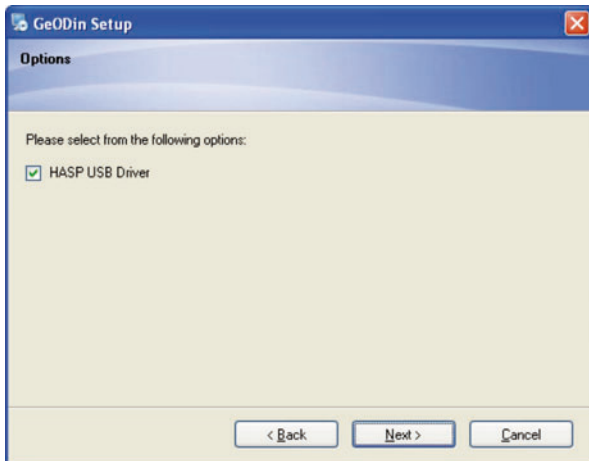
You will now be asked whether you want to install a driver for the HASP license key. If you are updating from GeODin 5.1 or later, the driver is already installed and must not be re-installed.

# GeODin 7 Installation Guide

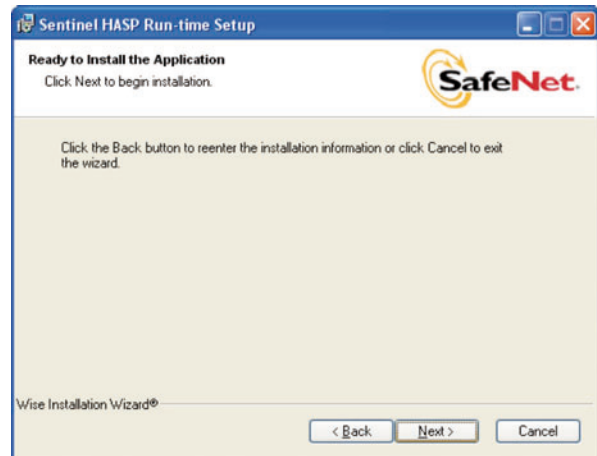


## Step 6: HASP Driver (only necessary on the first installation)

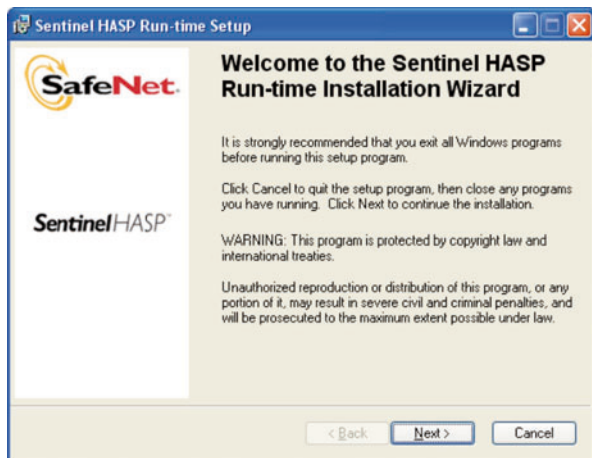
Please choose whether you want to install the driver for the GeODin HASP license key.



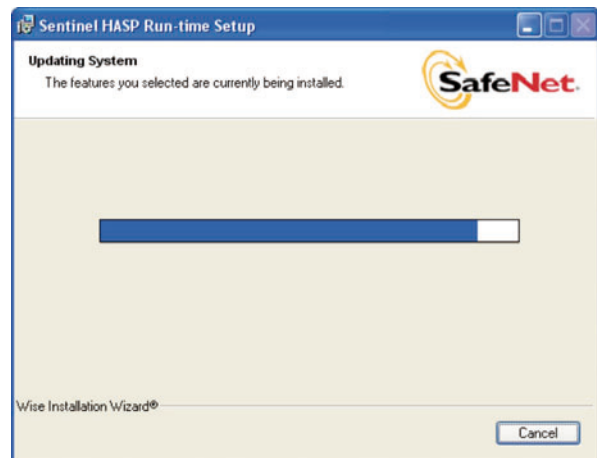
Step 5: HASP Driver



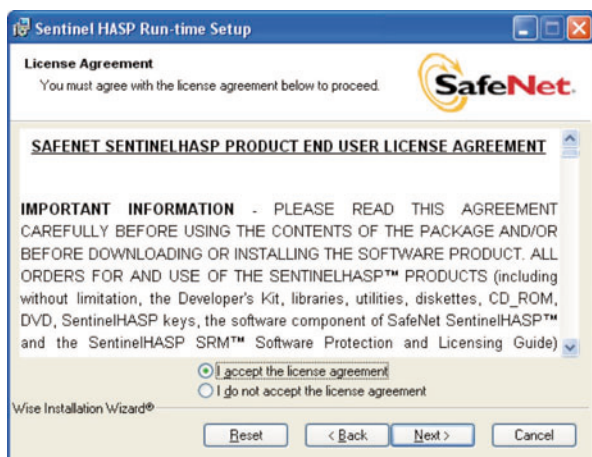
HASP Driver: Preparation



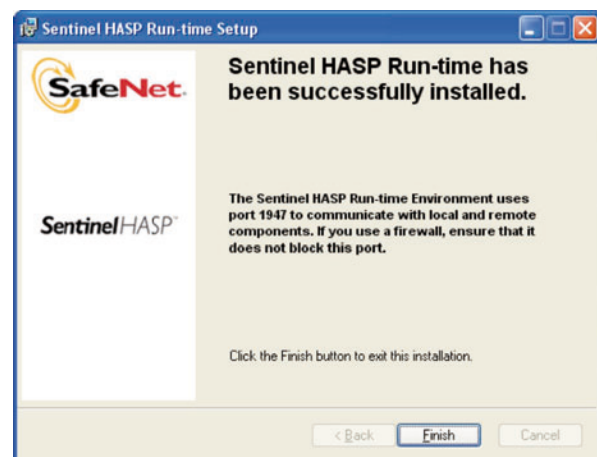
HASP Driver: Installation



HASP Driver: Files are installed



HASP Driver: License agreement

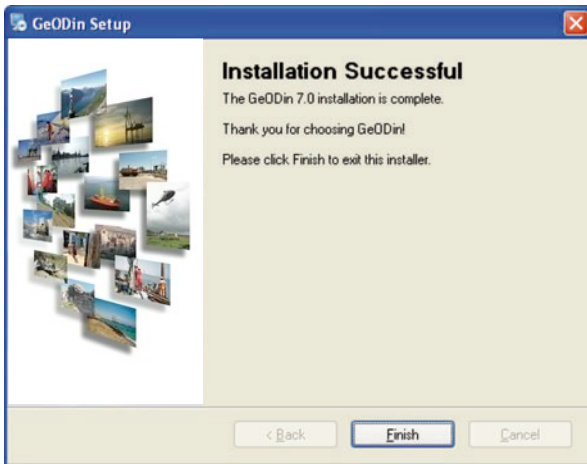


HASP Driver: Installation successful

# GeODin 7 Installation Guide



## Step 7: Installation successful

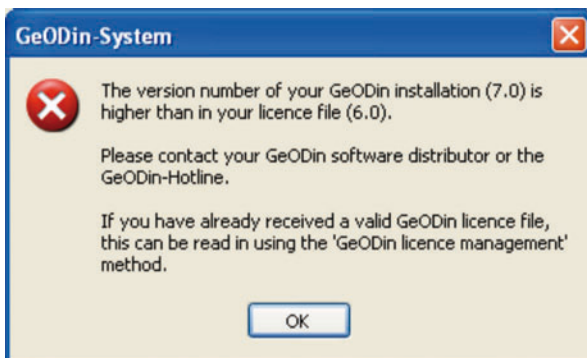


GeODin can now be started.

## Start GeODin

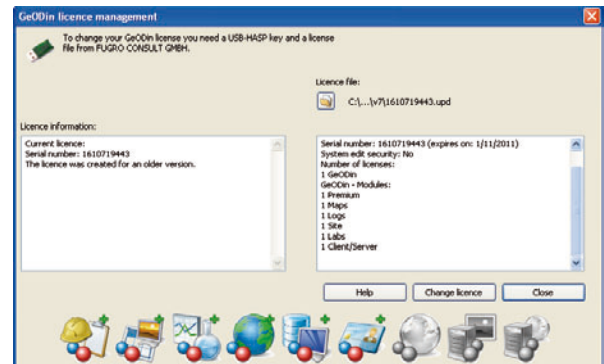


If you do not have a GeODin version 7 license already installed on your HASP key, the method <GeODin license management> will be started automatically.



## Update license file

Your current license information is shown on the left hand side. By clicking on the folder icon you can choose your new license file, which will be shown on the right hand side. It shows the serial number of your HASP key, the GeODin license and the GeODin modules.



After installing GeODin keep your version up-to-date by using the new method to check whether you have the latest build.

This is the most comfortable way to ensure that you have all the newest features and improvements.



This also lets you update your GeODin Help files as well as the various GeODin object types (masks and database structures for the different international standards).

Please see separate documentation on GeODin object types for further information.

# GeODin 7 Installation Guide



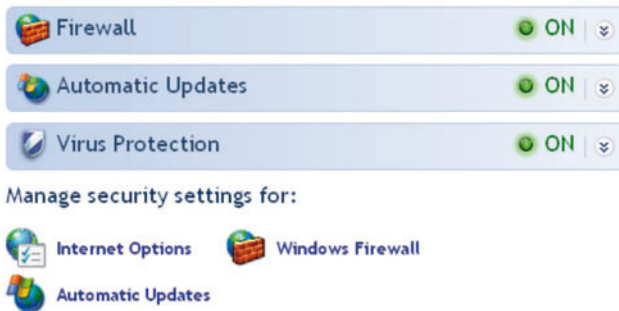
## Troubleshooting network installations

If a firewall is used, the connection between client (on which the user wants to run GeODin) and the license manager on the server can be interrupted.

If this is the case, open the settings of your firewall program (for example in the Windows security centre).

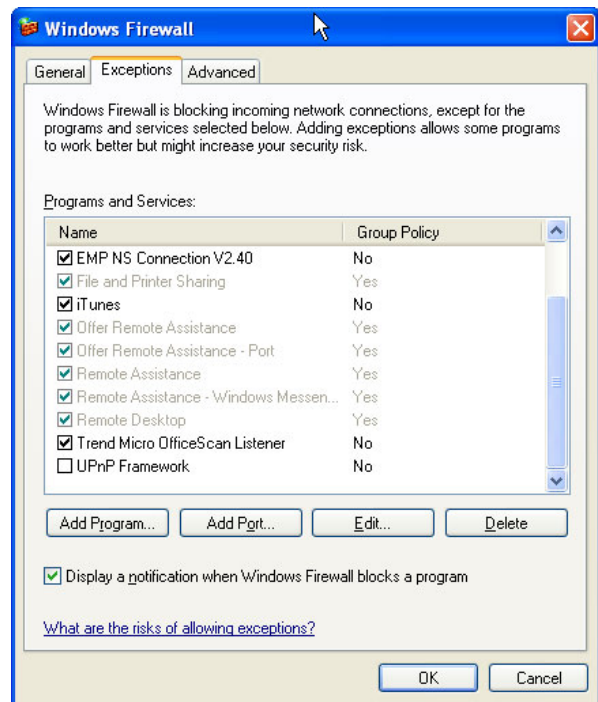
### Security essentials

Security Center helps you manage your Windows security settings. To help protect your computer, make sure the three security essentials are marked ON. If the settings are not ON, follow the recommendations. To return to the Security Center later, open Control Panel.  
[What's new in Windows to help protect my computer?](#)

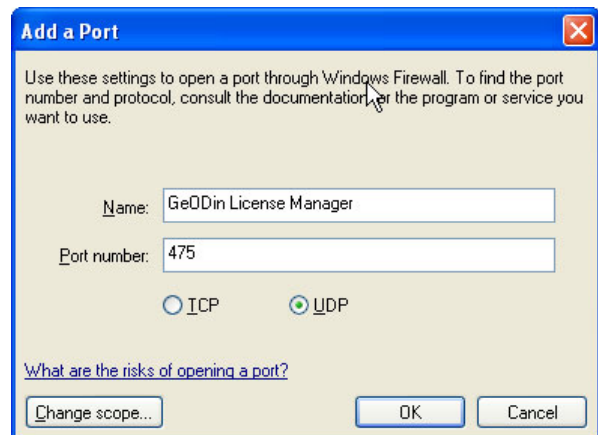


Define an exception to the Firewall rules, allowing GeODin to communicate with the license manager or the server.

**Port 475 must be open for UDP connections.**



Defining exceptions for firewall functions



Adding a port

### Fugro Consult GmbH

Wolfener Strasse 36U

12681 Berlin

Germany

GeODin Hotline: +49 (0)1805 436346

Email: [support@geodin.com](mailto:support@geodin.com)