



What's new in GeODin 7



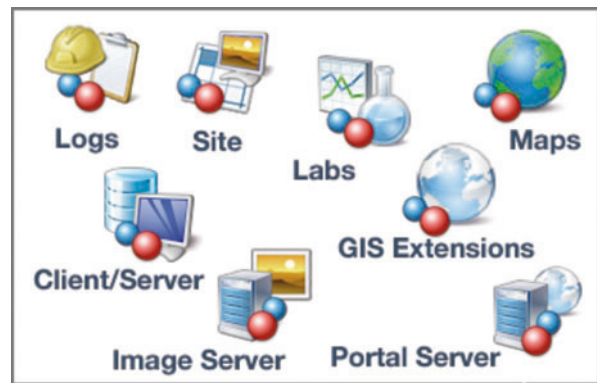
GeODin 7 allows you to build a complete modular solution to meet your data management challenges. GeODin Maps now embeds GIS within GeODin 7, which also has over 50 new features



Modular structure

The former GeODin Editions - Kompakt, Standard, Professional and Enterprise - have been replaced with a more flexible modular structure comprising Logs, Site, Labs, Maps, Client/Server and GIS Extensions. This enables users to add specific modular functionality to a basic GeODin 7 license.

The basic GeODin 7 license offers data collection and reporting features. In addition there is a completely new product GeODin Maps, providing an embedded GIS within GeODin 7. The GeODin Image and Portal Servers have been made modular to enable users to publish geo-environmental data from custom GeODin installations, viewable with a web browser.

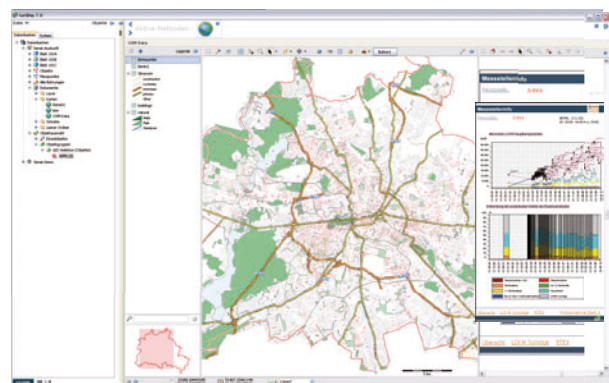


GeODin 7: new modular structure

New combinations

- **GeODin 7 + Client/Server only 1.190 €**
(data collection and client/server databases)
- **GeODin 7 + Logs + Labs only 2.085 €**
(borehole profiles and geo-environmental database)
- **GeODin 7 + Logs + Site + Maps only 2.970 €**
(borehole profiles, cross-sections, site plans, GIS)
- **GeODin 7 + Logs + Image Server only 11.185 €**
(publish boreholes on the web)
- **The entry point for GeODin has been reduced**
to just 295€ (from 1.295€).

This enables users to add specific modular functionality to a basic GeODin 7 license - modules cost just 895€ each (prices do not include sales tax - valid from June 1st 2010)



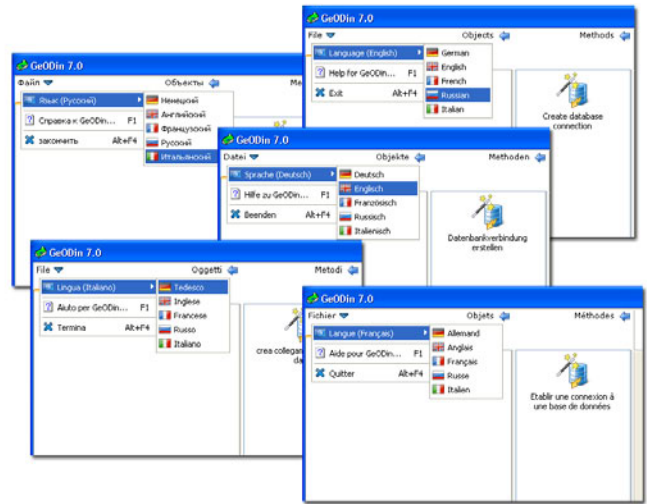
New in Version 7: GeODin Maps

What's new in GeODin 7



Multilingual

Through the internal transformation to Unicode in GeODin 7 it is now possible to display different character sets within the program: German, English, French, Italian and Russian. It is also possible to change the language of the user interface on the fly and hence work with data from colleagues from different regions of the world, all in one GeODin database.

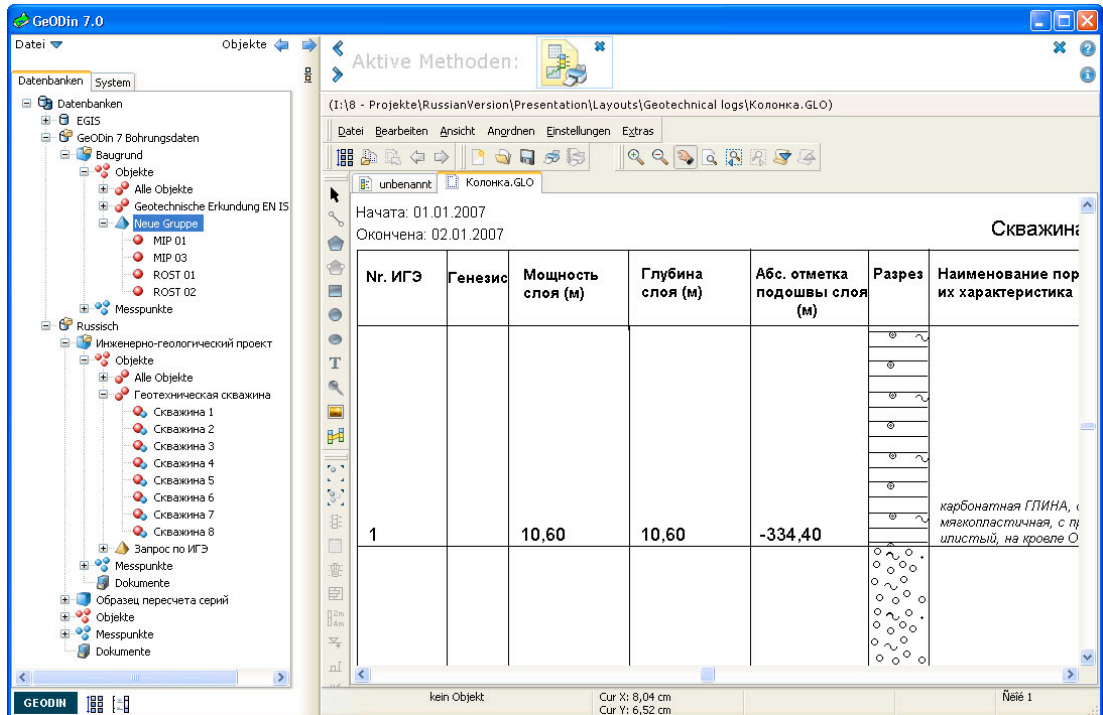


Change quickly and easily between different languages

International version

GeODin 7 has been developed for Unicode so that users may switch between languages with different character sets.

Latin, cyrillic or arabic fonts can co-exist within the same database or layout. This both enables and simplifies truly international co-operation on multi-lingual projects with different partners.



Layouts in different character sets can be handled with GeODin 7

GeODin Maps

GeODin Maps is an embedded GIS within the GeODin. It displays maps, points of interest, links to customised templates and is fully integrated into your workflow. Simple and intuitive. It is so easy to present your geo-data within a map context because you always have direct access to you borehole and measurement information, as well as documents and other graphics.

GeODin Maps quickly becomes an information portal when used in combination with GeODin layouts. These are your standard templates with added portal functionality that allows you to interlink a series of layouts. Favourite layouts can be defined for groups and queries, so that a selection in the map results in the best presentation of your data.

GIS data (maps and layers) are organised using the document management functionality built into GeODin. Settings can be saved so that layers look the same across different maps.

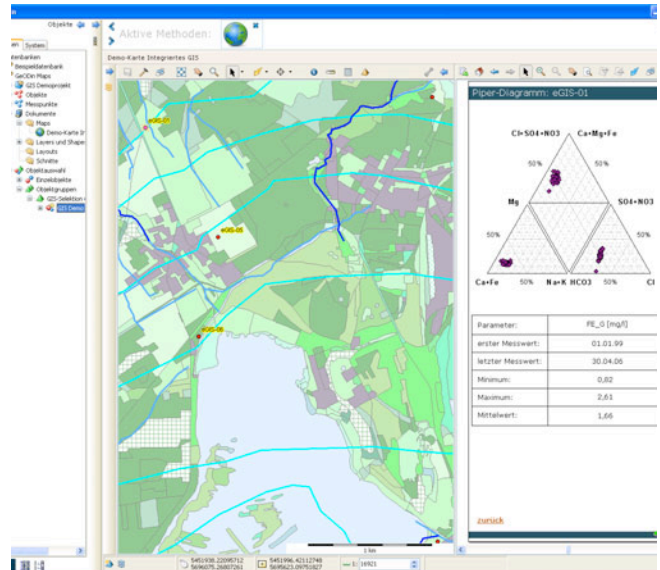
Interactive cross-sections

The GeODin Site module extends GeODin 7 by providing users tools for creating dynamic cross-sections and site plans. Both assistants were completely rewritten so that the construction is both interactive and very fast.

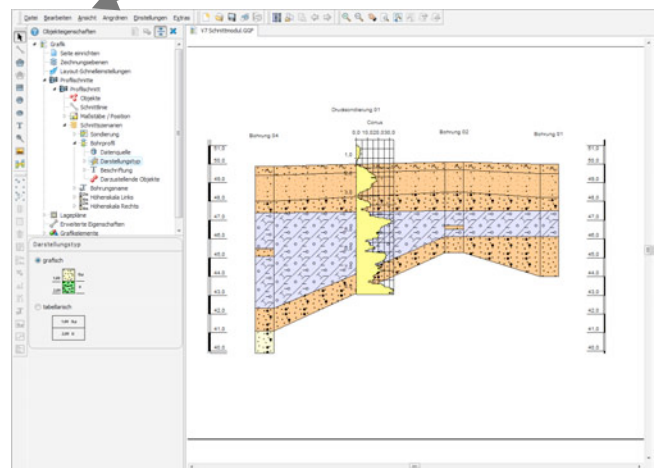
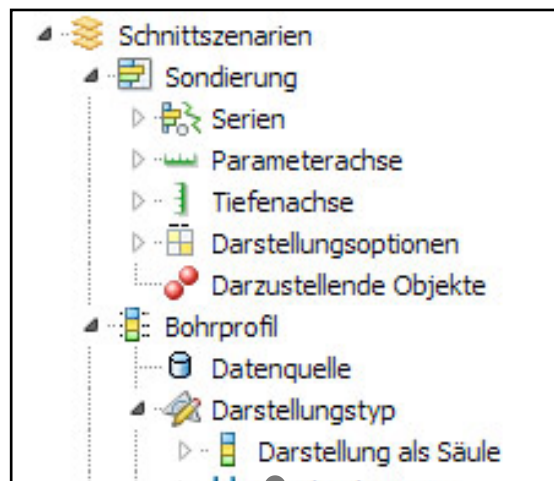
All the settings for editing cross-sections and site plans immediately update the graphic window, so that changes can be easily fine-tuned which produces more informative results far more quickly than before.

Before completing the cross-sections there is now a choice between static and dynamic options. The dynamic option saves only links to GeODin objects, so that if the database contents are changed this will be automatically updated in the cross section.

In addition to the standard vertical scale, there is now an option to use a second vertical scale for the ground surface, which is useful for steep topography and shallow boreholes.



GeODin Maps - a simple and intuitive view data in overview



GeODin Site - cross-section workflow and design

What's new in GeODin 7



Presentation of depth related photos

The graphic element borehole profile can display depth related images stored in GeODin's integrated document management system. GeODin joins a series of images such as core photos together by scaling and cropping the images to produce a photo-realistic view which can be displayed alongside a "classic" geological profile with fill patterns and layer descriptions.

EN ISO

The EN ISO 22475 object type of geological investigations to European standards has been further improved with the addition of hard rock layer descriptions and fill patterns. Now fracture and joint information as well as weathering and strength can be entered and displayed independently from the petrographic layer description.

Additionally you can collect and display data recorded and well design information for geothermal borehole projects.

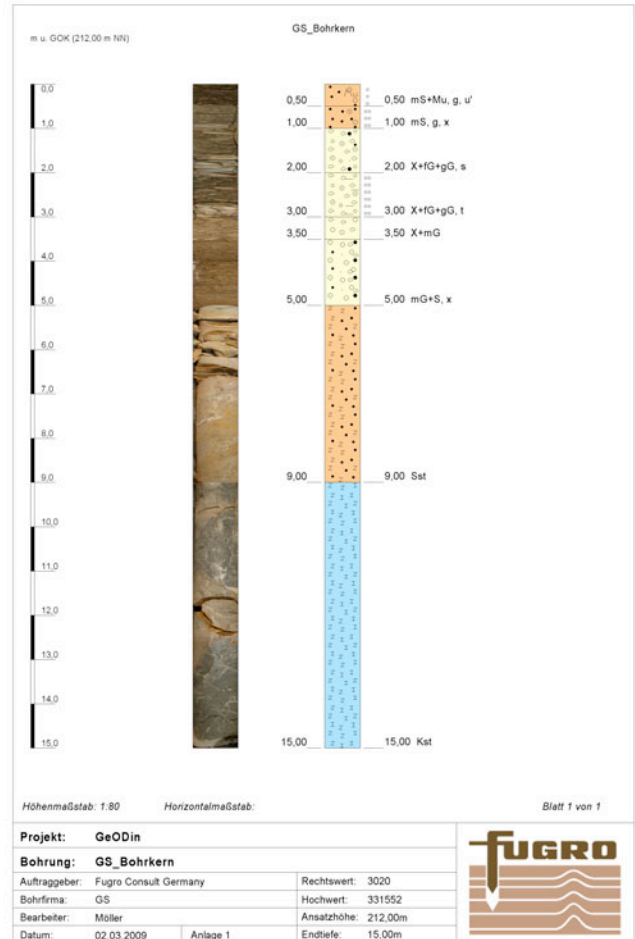
Support for Office 2007

GeODin 7 supports importing, exporting and connecting to databases in the new Microsoft Office file formats: (*.docx, *.xlsx and *.accdb).

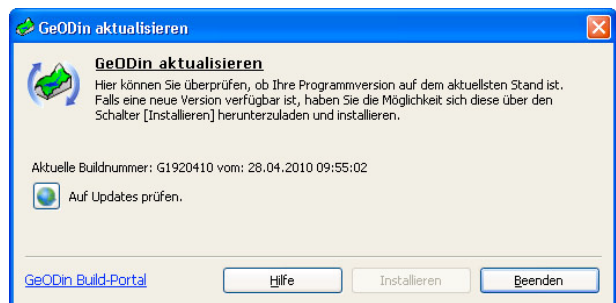
Online updates

Keep your GeODin version up-to-date by using the new method to check whether you have the latest build.

This also lets you update your GeODin Help files as well as the various GeODin object types. This is the most comfortable way to ensure that you have all the newest features and improvements.



Borehole photos displayed to scale next to layer data



Update your GeODin installation online

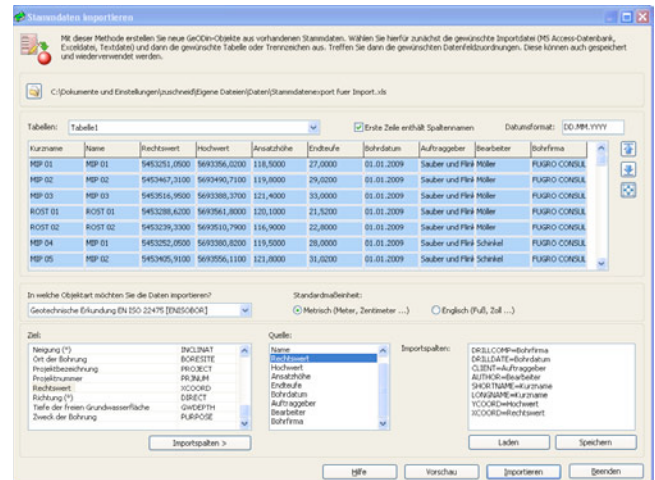
What's new in GeODin 7

General data import



The new <Import general data > method can import contents from Microsoft Access databases, Excel tables or text files to existing GeODin objects.

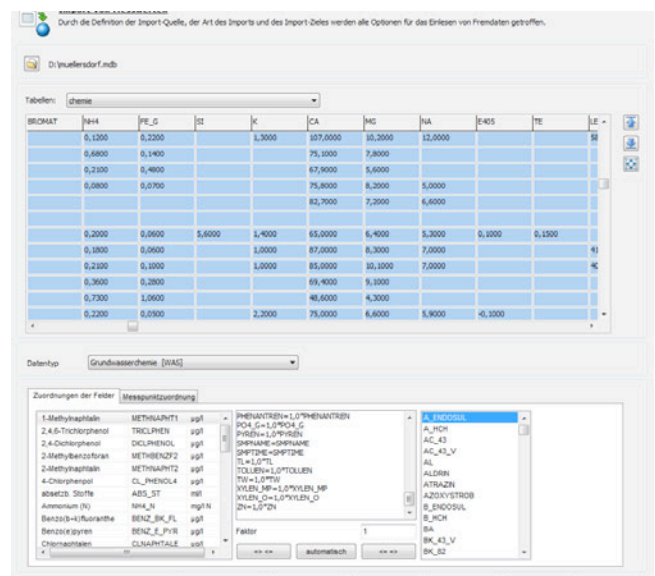
The relationship between the data to be imported and the fields in the existing database can be freely configured and saved for re-use later. Hence it is possible to import say co-ordinates of objects at a later date, when this information is not available at the time. Furthermore it is possible to create new GeODin objects from data sets in external sources. This is especially useful when a project is based on external tables where there is a list of borehole names, co-ordinates, heights etc. After importing this data, typical GeODin information such as geological layer descriptions, samples, well design etc. can be added to these objects.



Import general data from MS Excel, MS-Access or text files

Improved import of measurement data

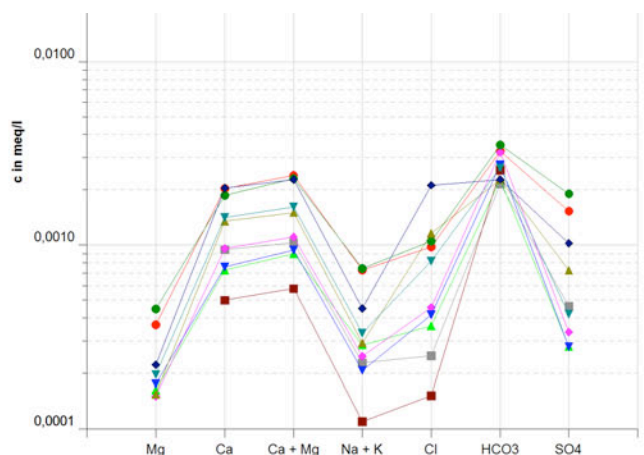
The method to import measurement data has been improved with a preview function. The data to import can be in rows or columns in the following formats: *.xls, *.mdb, *.dbf, *.csv and *.txt.



Quick clearly structured import of measurement data

Schoeller diagrams

GeODin 7 enables you to display a list of parameters on the x-axis of a diagram, plotted against concentration values as typically shown in a Schoeller diagrams. There are a series of these templates available for the object types SEP1 and SEP3, which can be found on the GeODin 7 DVD or downloaded from www.geodin.com



Analysing hydrogeological data with the Schoeller diagram

