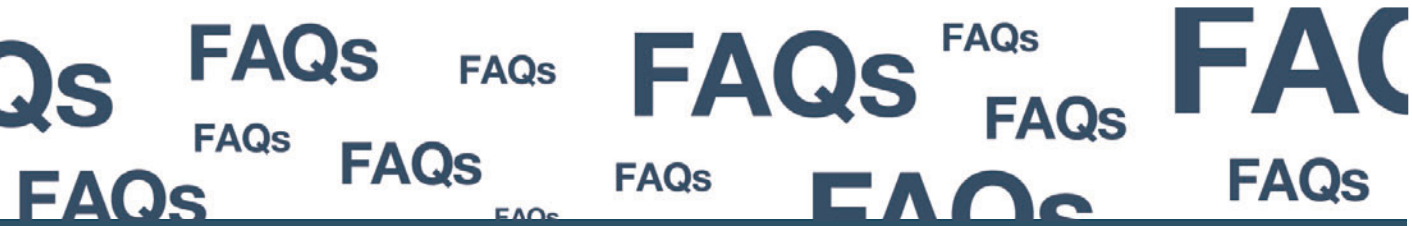




GeODin 7: Compatibility

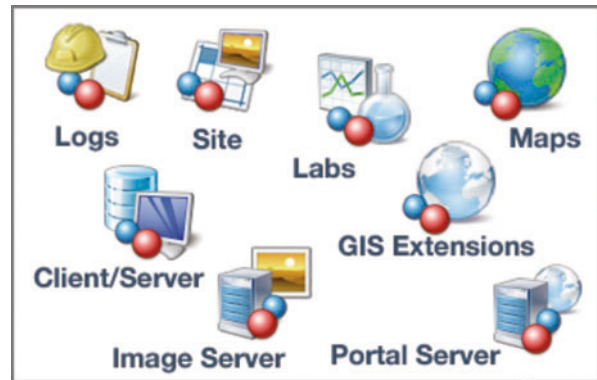


This guide presents important information for GeODin users updating to version 7. Please read carefully and contact support@geodin.com if you have any questions.



Unicode

GeODin is used worldwide for a variety of data management projects. The new GeODin version 7 has been re-designed for full Unicode support to enable complete multilingual data collection and presentation. There is now only one GeODin version that can be run in five languages independently of the installed Windows® OS. This enables the loss free transfer of graphic files between languages, including Eastern European and Russian systems, as well as the capability to change the GUI language at run time.



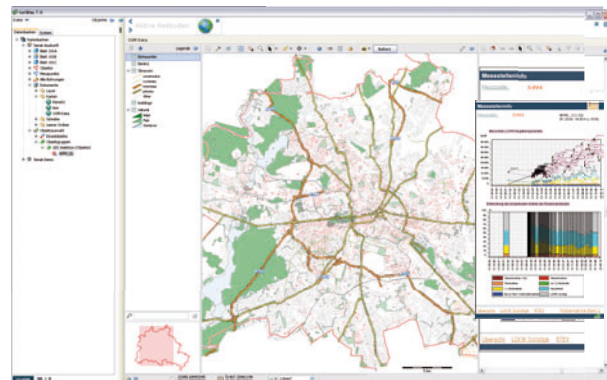
Version 7 modules

Compatibility

GeODin 7 can read all databases, layouts and other GeODin files created with earlier versions, so that you can continue working with your project data after updating.

GeODin files saved under GeODin 7 cannot be opened with an earlier GeODin version. The most common formats are:

- GeODin layout file (.glo)
- GeODin graphic file (.ggf)
- GeODin layout list (.gll)
- GeODin dictionaries (.gsd)
- GeODin queries in databases (.gsq, .glq)



New in Version 7: GeODin Maps

We strongly advise GeODin users worked in mixed environments (i.e. several different GeODin versions) to ensure that all parties update to version 7.

Fugro Consult GmbH
 Wolfener Strasse 36U, 12681 Berlin, Germany
 GeODin Hotline: +49 (0)1805 436346
 Email: support@geodin.com